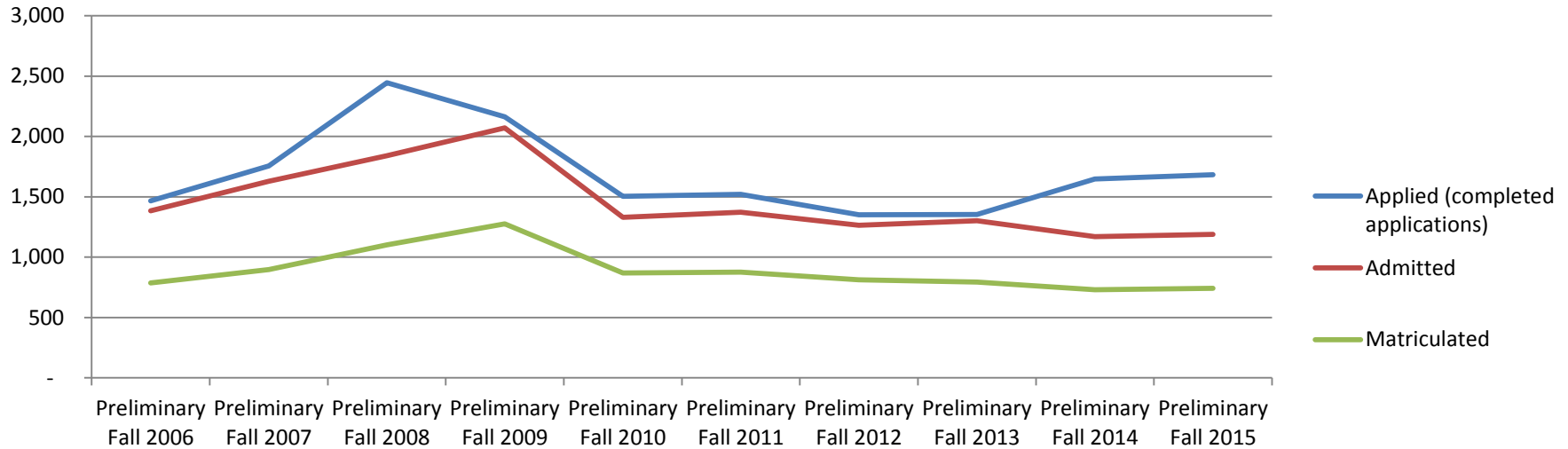


Texas A&M University - Corpus Christi

Preliminary 12th Class Day Headcount Comparison and Admissions Data

Preliminary Fall 2006 to Preliminary Fall 2015

Admissions - Fall Undergraduate Transfers and Re-admittances



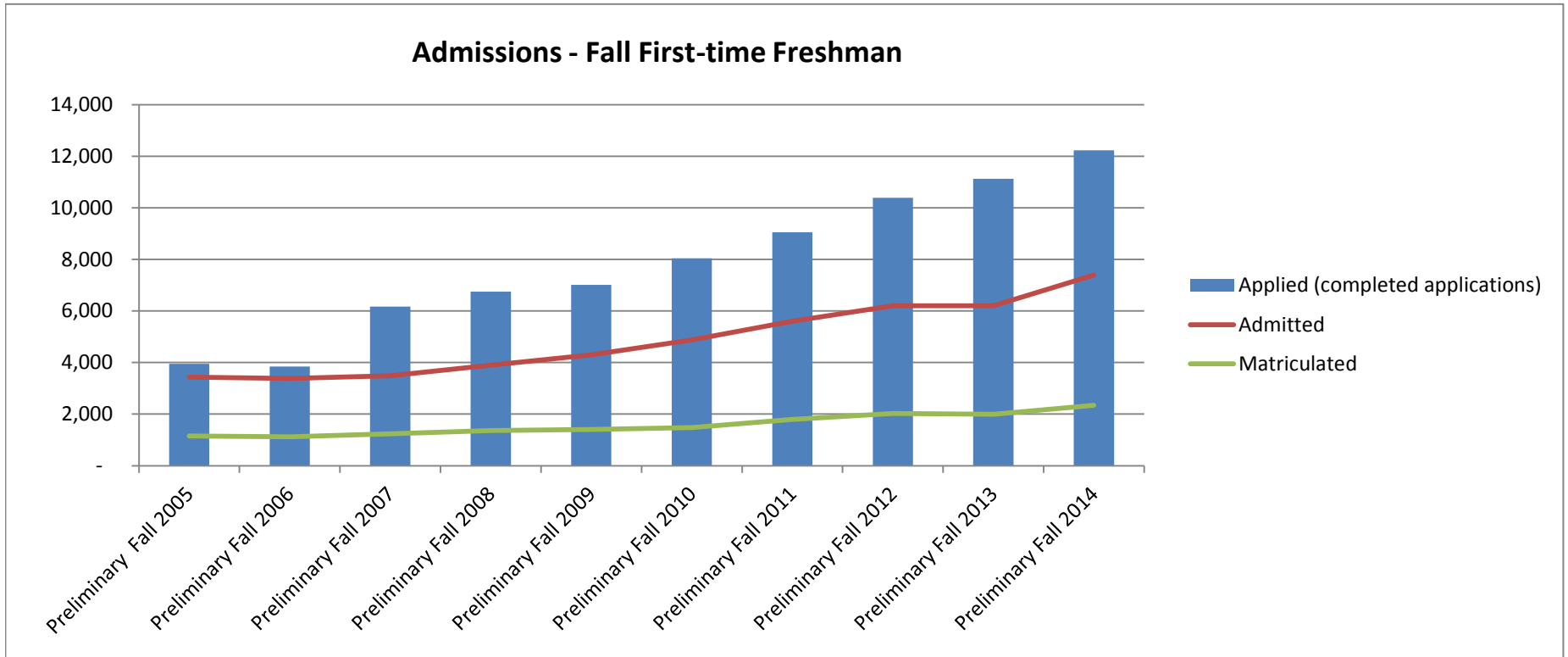
	Preliminary Fall 2006	Preliminary Fall 2007	Preliminary Fall 2008	Preliminary Fall 2009	Preliminary Fall 2010	Preliminary Fall 2011	Preliminary Fall 2012	Preliminary Fall 2013	Preliminary Fall 2014	Preliminary Fall 2015
Admissions - Fall Undergraduate Transfers and Re-admittances										
Applied (completed applications)	1,467	1,755	2,444	2,162	1,504	1,521	1,350	1,354	1,648	1,682
Admitted	1,384	1,628	1,841	2,072	1,329	1,373	1,265	1,301	1,171	1,188
Matriculated	786	897	1,101	1,277	868	877	812	793	731	741

Source: PIR-Preliminary 12th class day reports

Texas A&M University - Corpus Christi

Preliminary 12th Class Day Headcount Comparison and Admissions Data

Preliminary Fall 2006 to Preliminary Fall 2015



	Preliminary Fall 2006	Preliminary Fall 2007	Preliminary Fall 2008	Preliminary Fall 2009	Preliminary Fall 2010	Preliminary Fall 2011	Preliminary Fall 2012	Preliminary Fall 2013	Preliminary Fall 2014	Preliminary Fall 2015
Admissions - Fall First-time Freshmen										
Applied (completed applications)	3,952	3,843	6,172	6,748	7,011	8,044	9,056	10,390	11,129	12,235
Admitted	3,439	3,381	3,492	3,902	4,300	4,881	5,601	6,199	6,203	7,396
Matriculated	1,150	1,120	1,236	1,361	1,407	1,482	1,792	2,027	1,992	2,339

Source: 1. PIR-Preliminary 12th class day reports (Fall 2006-2007)

2. Argos Reports (Fall 2008-15) from Banner